

# Americans with Disabilities Act (ADA) Compliance

## Speed Queen Washers and Dryers ADA Forward/Side Reach Guidelines

U.S. Access Board July 3, 2004

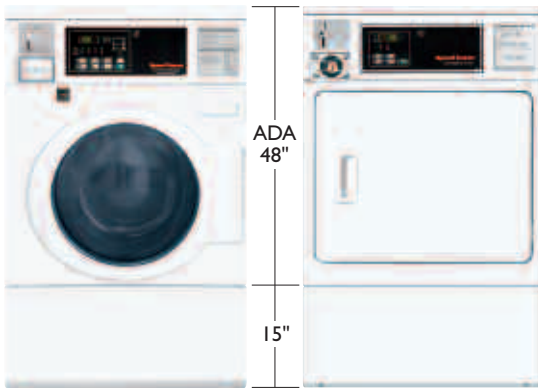
### Speed Queen Front Control Washer and Dryer

#### Washer Models:

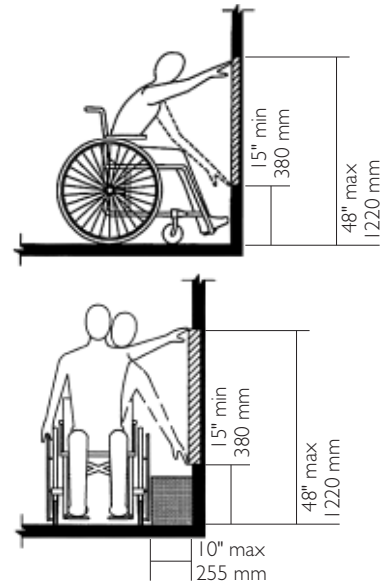
SWFT7I, SWFY7I, SFNLCFS, SFNLCFJ, SFNLYFS

#### Dryer Models:

SFET07, SFGT09, SFEY07, SFGY09, SDELCFG, SDGLCFG, SDELYFG, SDGLYFG



### Unobstructed Reach Range



308.1	SQ Washer	ADA Compliance
Low 15"	15"	Yes
High 48"	43"	Yes

### Speed Queen Rear Control Washer and Dryer

#### Washer Models:

SWR97I, SWRT7I, SWRY7I, SFNLCRS, SFNLYRS

#### Dryer Models:

SDET07, SDGT09, SDG509, SDEY07, SDGY09, SDELCRG, SDGLCRG, SDELXRG, SDGLXRG, SDELYRG, SDGLYRG



### Obstructed High Reach with Exception

#### 308.3.2 Obstruction High Reach

**Exceptions: I** – The top of washing machines and clothes dryers shall be permitted to be 36" (915 mm) maximum above the finish floor.

**309.4** – Operable parts shall be operable with one hand and shall not require tight grasping, pinching or twisting of the wrist. The force required to activate operable parts shall be 5.0 pounds (22.2 N) maximum.

308.3.2 Exceptions: I	SQ Washer	ADA Compliance
Height of Obstruction 36"	36"	Yes
Depth of Obstruction (max is 24")	24"	Yes